



Legend

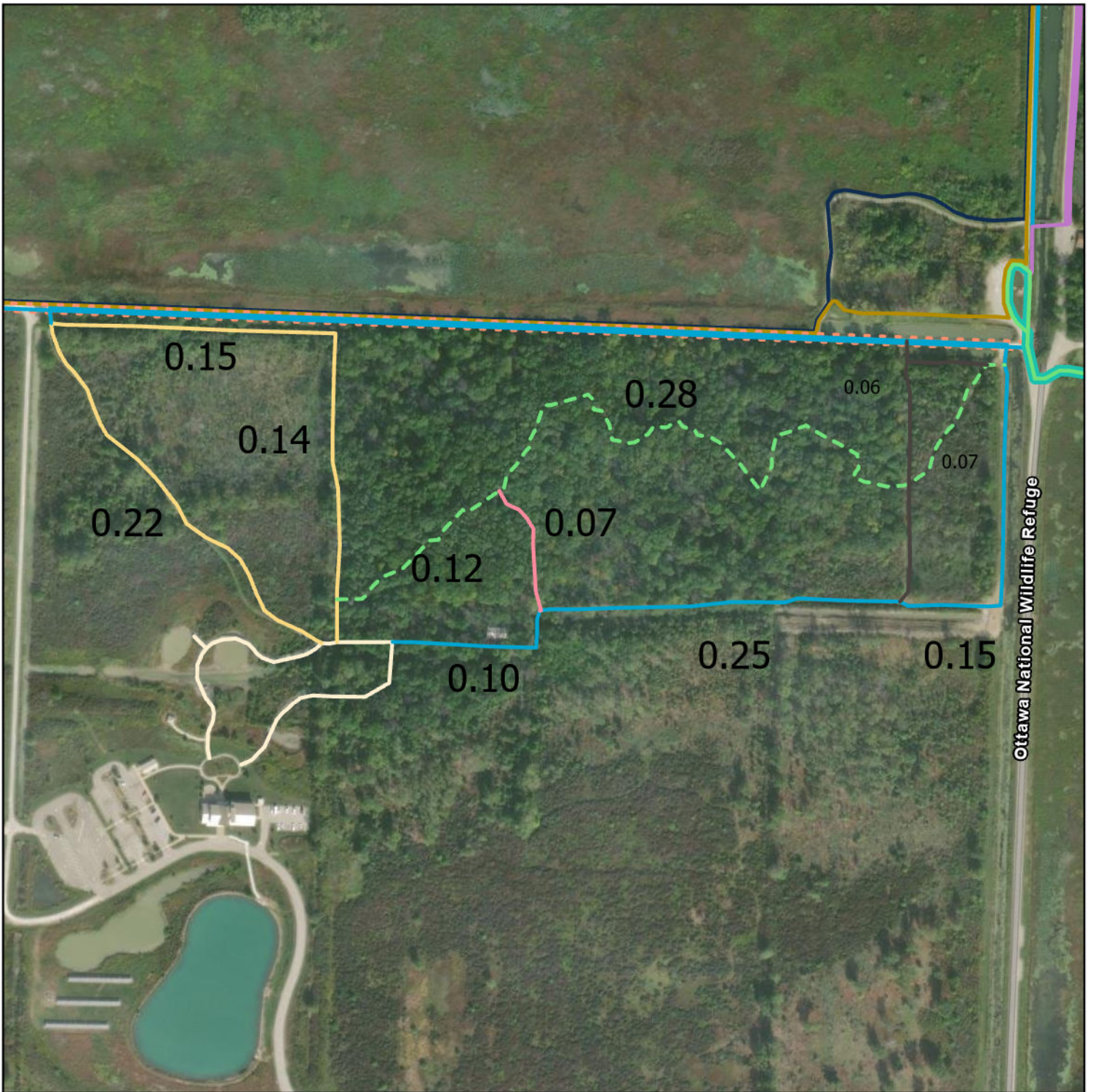
Walking Trails

| | |
|-------------------------------|------------|
| Dark Blue Trail | 3.00 Miles |
| Light Blue Trail | 3.50 Miles |
| Light Green Trail | 2.75 Miles |
| Orange Trail | 2.25 Miles |
| Pink Trail | 2.50 Miles |
| Purple Trail | 3.50 Miles |
| Gold Trail | 1.75 Miles |
| Teal Trail | 1.30 Miles |
| Gallagher Trail | 0.50 Miles |
| Spur Trail to Gallagher Trail | 0.15 Miles |

Ottawa National Wildlife Refuge - Main Complex Trails

Located at 14000 W. State Route 2, Oak Harbor, OH 43449



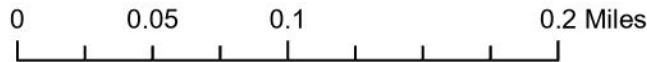


Legend

South Woods Walking Trails

| | |
|---|------------|
| --- Green Trail | 0.50 Miles |
| --- Light Blue Trail | 0.96 Miles |
| --- Orange Trail | 0.28 Miles |
| --- Pink Trail | 0.07 Miles |
| --- Maroon Trail | 0.19 Miles |
| --- Yellow Trail | 0.52 Miles |

Ottawa National Wildlife Refuge - South Woods Located behind the Refuge Visitor Center





Ottawa National Wildlife Refuge - Grimm Prairie

Located on the west side of the main complex near the intersection of Krause Rd and N. SR 2.

Legend

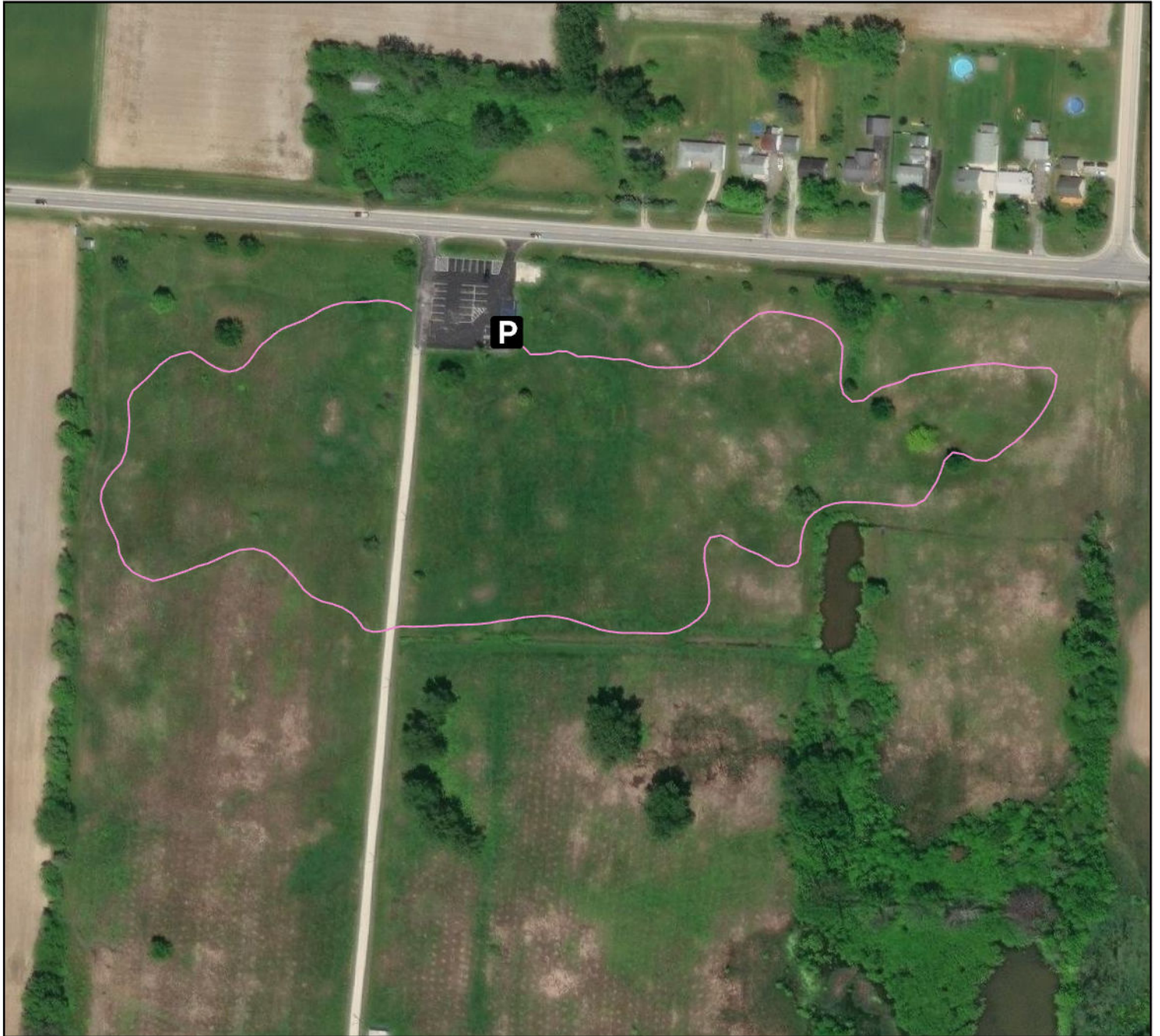
— Adam Grimm Trail 0.75 Miles

0 0.05 0.1 0.2 Miles



Marinewood Unit Trail : 0.65 Miles

Located at 4640 W Harbor Rd, Port Clinton, OH 43452



Legend



Parking

— MarineWood Trail 0.75 Miles



Nehls Memorial Preserve





Located at 4400 E. Muggy Rd, Catawba Island, Ohio



Legend

Nehls Unit

Name

| | | |
|--|------------------------|------------|
|  | Nehls Spur Trail | 0.03 Miles |
|  | Nehl's Tour Route Loop | 0.45 Miles |
|  | Nehls Meadow Trail | 0.44 Miles |
|  | Nehls Woodlot Loop | 0.14 Miles |

